



KVCRP Pop Up Drain - Upper Floor

This is the Upper floor version of our KVCRP Pneumatic Floor Gully. The pneumatic connection is accessed from **outside** the drain body. An air feed stainless pipe, by others, then hangs from a bracket connected to the underside of the upper floor slab.

There are 3 options for the pneumatic valve choice:

Single Acting Sprung Out Cylinder

Air supply required to **close the drain** and exhausted to allow the cover to open using an internal spring. This system is generally used when the drains are connected to the fire suppression system. In the event of the air supply system failing the covers will open.

Single Acting Sprung In Cylinder

Air supply required to **open the drain** and exhausted to allow the cover to close using an internal spring. This system is generally used in clean production areas. In the event of the air supply system failing the covers will remain sealed.

Double Acting Cylinder

Air supply is required to **both open and close the drain**, this system is generally used when drains are to be opened for cleaning / wash down cycles. Constant air supply required to keep the cover sealed.

- INDUSTRIES**
- BioPharma
 - Pharmaceutical
 - Laboratories



Activated by Control Room



Activated by Sprinkler System



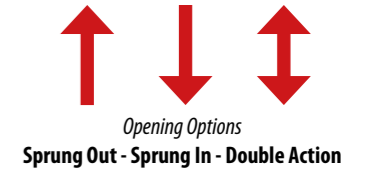
Activated by Wall Mounted Rotary Switch



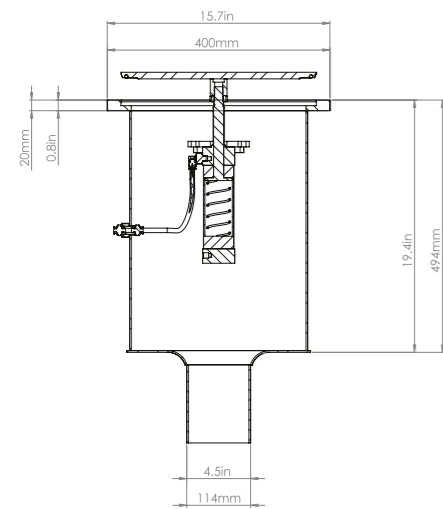
Tops Round Top Standard for Poured Floors

Tops Square Top Options

Tops Vinyl Clamp Top Option



1.57" (40mm) clear opening under cover



Product Code	Height	Top Diameter	Body Diameter	Outlet	Flow Rate US GPM
KVCRP400/4"RD (U)	19.4in (494mm)	15.7in (400mm)	13.0in (330mm)	4" Sch 10	126.8 GPM (8 l/s)
KVCRP400/6"RD (U)	19.4in (494mm)	15.7in (400mm)	13.0in (330mm)	6" Sch 10	317 GPM (20 l/s)



Bottom Outlet Push Fit (standard)



Bottom Outlet Threaded (optional)



Bottom Outlet 4" 150lb R/F S/O ANSI Flange



Bottom Outlet With P Bend Trap