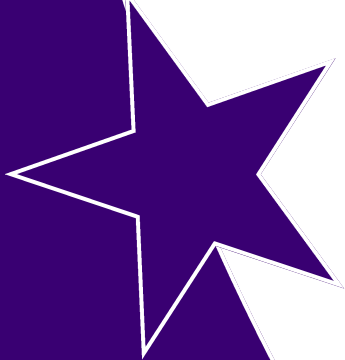
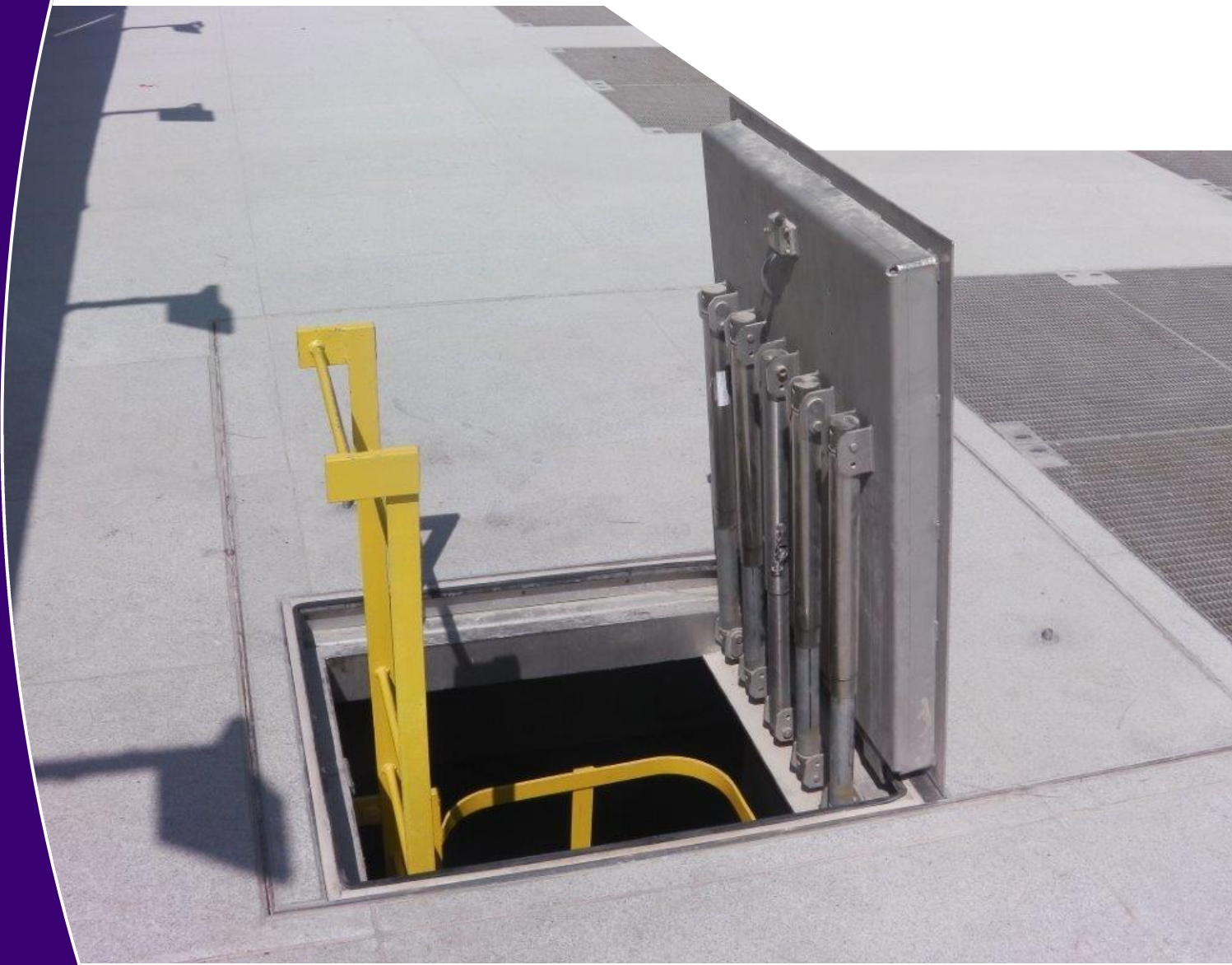


Kent Paver Man Access



KENT PAVER MAN ACCESS KPMA-2400/2400

Kent Paver Man Access Manholes are used where equipment may be inserted into a chamber at the beginning of a project and should not need to be replaced for many years. The tray therefore can be one large cover, optionally watertight, but with a Kent Hinged Solo Paver insert which acts as a man access hatch for frequent access.

They can be watertight against pressure-less water and can feature an additional internal drainage channel as an extra option.

They contain all the features of our Kent Solo Paver. In addition the manholes are hinged with a robust stainless steel hinge, they have keying in mesh to allow block adhesion with epoxy mortar, and they have Kent lift-assist mechanical struts to allow the manhole to be opened with a force compliant with manual handling regulations.

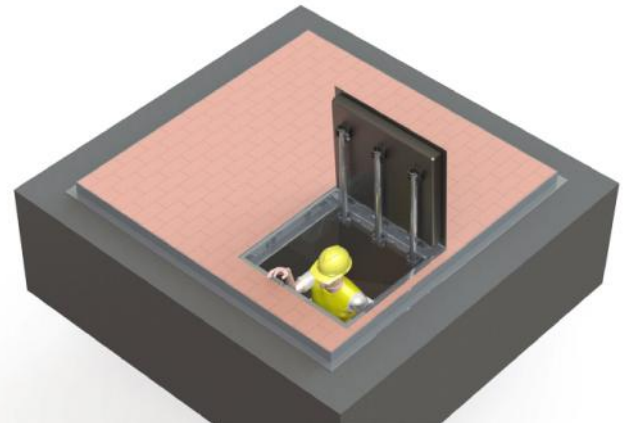
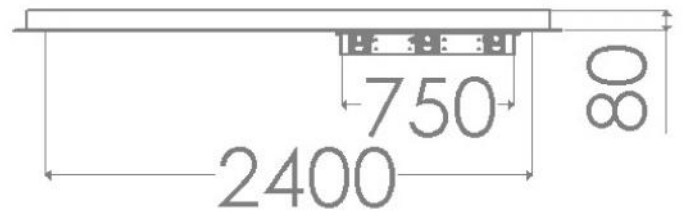
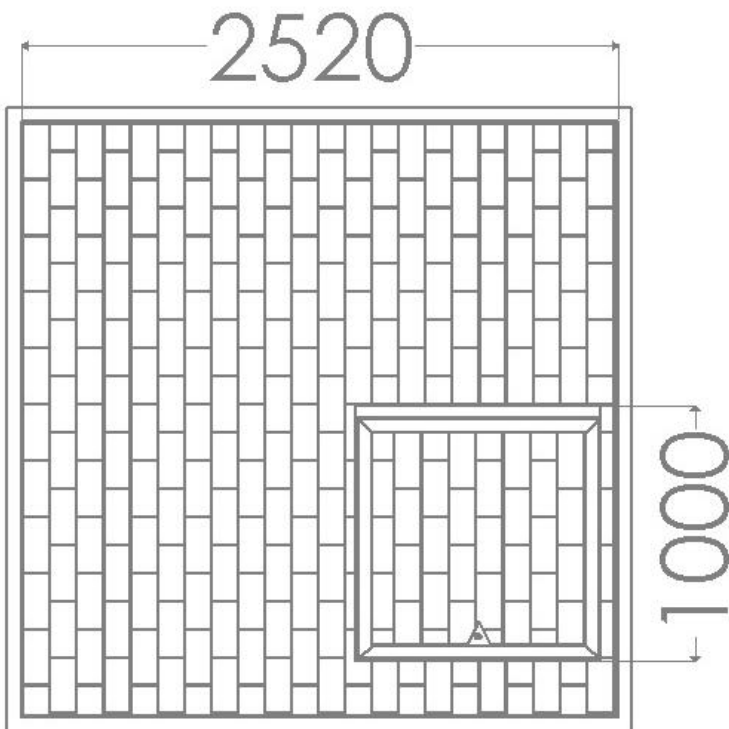
The Kent Paver Man is currently in Lusail, Qatar

Features:

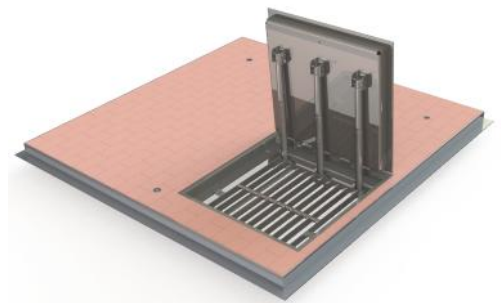
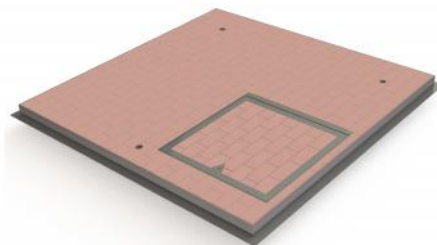
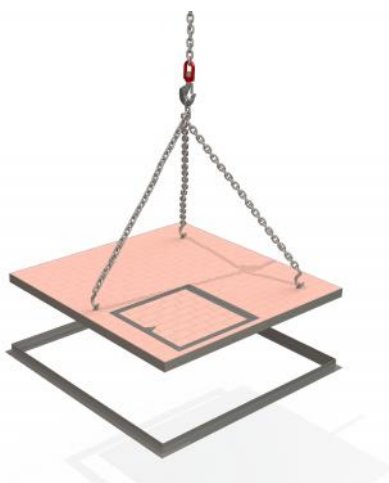
- Watertight against pressure-less surface water
- Laser Cut lettering
- Watertight option with additional internal drainage channel feature
- Safety stay as standard
- Infrequent Equipment Access
- Frequent Man Access
- Man access hatch can open from above only
- Man access hatch can open from above and below



KENT PAVER MAN ACCESS KPMA-2400/2400



Product Code	Clear Opening	Tray Depth	Visible Frame Size (Unsealed)
KPMA-1800/1800	1800mm x 1800mm	80mm	1920mm x 1920mm
KPMA-2400/1800	2400mm x 1800mm	80mm	2520mm x 1920mm
KPMA-2400/2400	2400mm x 2400mm	80mm	2520mm x 2520mm



KENT PAVER MAN ACCESS KPMA-2400/2400**Stainless Steel Maintenance**

Clean the stainless steel components using warm water with a mild detergent with a non abrasive cloth or sponge. Heavier stains may require the use of a nylon scouring pad or a stainless steel cleaner. To remove paint or graffiti (or light concrete splashes) use a cloth and alkaline or solvent paint strippers according to type of paint. For Satin Finish Stainless try to follow the direction of the grain when cleaning vigorously or polishing. For Bead Blasted Finish use a circular motion. Rust spots or 'tea stains' can occur on the surface of the material, these are normally caused by contamination from ordinary mild steel, particularly in areas where construction work has been undertaken. Where contamination of the stainless has occurred from ordinary mild steel coming into contact with the stainless, use Rust Remover 410. In cases where the surface is severely stained as a result of severe environmental conditions or scratched due to misuse, it may still be possible to restore the original finish using chemicals such as Oxalic Acid solution. There are many stainless steel polishes available to enhance the surface finish. We recommend Mister Stainless Ltd. as a provider for stainless steel cleaning products

Galvanised Mild Steel Maintenance

Purchase an alkaline cleaner. These products are non-abrasive combinations of detergents and solvents designed to clean and maintain galvanised steel. With the use of rubber gloves, fill a bucket with a gallon of hot (not scalding) water and add one ounce of the Alkaline Cleaner. Stir well. Dip a soft bristle brush into the cleaning solution. Beginning at one end of the Product, scrub gently, using a circular motion. Go from one end of the product to the other, overlapping the circles repeatedly to make sure you do not miss any spots. Rub the towel over the product to make sure the steel has been cleaned. The towel will remove any excess water or cleaner from your project. After you have used the towel, let it dry.



Specify

Specify the amount of Trays

Customise your size, or go with our standard clear opening
2400mm x 2400mm x 80mm
(See size chart on page 2)

Specify:

Kent Paver Man Access(KPMA-2400/2400); 2400mm x 2400mm clear opening, 80mm tray depth; Single Tray with man access; Unsealed; Grade 316 Stainless steel; Loading FACTA B

Decide between Sealed or Unsealed

Choose your steel:
Grade 304 Stainless steel
Grade 316 Stainless steel
Galvanised Mild Steel

(See page 5 for more detail)

Choose your loading
FACTA A
FACTA AA
FACTA AAA
FACTA B
FACTA C
FACTA D

Options

Various Loadings (See FACTA and BS9124:2008 Application load specific tables)

Various Tray Depths (80mm, 100mm)

Grade 304L Stainless Steel

Grade 316L Stainless Steel

Mild Steel Galvanised to BS EN ISO 1461 (1999)

Mild Steel Galvanised to 140 Micron minimum for middle East projects

Safety Barrier

Safety Grid (can be Automatic for larger sizes)

Unsealed or Double Sealed

FACTA Class	Slow Moving wheel Loads	Kent Safety Test (Unfilled)
A	0.6T	0.8T
AA	1.5T	3.1T
AAA	2.5T	5.2T
B	5T	10.1T
C	6.5T	13.2T
D	11T	22T

BSEN124	Slow Moving wheel Loads	Kent Safety Test (Unfilled)
A15	0.6T	1.5T
B125	5.0T	12.5T
C250	6.5T	25.0T
D400	11.0T	40.0T

KENT PAVER MAN ACCESS KPMA-2400/2400

Grade 304 vs. 316 Stainless Steel

The last thing our we want for our customers is to have to deal with staining or rust on their Kent Stainless Steel products. If your product will be exposed to harsh or coastal environments , we recommend upgrading to grade 316L stainless steel which extends the life span of the product for years more. Consider this fact when planning a future project.

Grade 304L Stainless Steel

304 stainless steel is the most common form of stainless steel used around the world. It contains between 16 and 24 percent chromium and up to 35 percent nickel, as well as small amounts of carbon and manganese. 304 can withstand corrosion from most oxidizing acids. That durability makes 304 easy to sanitize, and therefore ideal for kitchen and food applications. It is also common in buildings, décor, and site furnishings. However, it is susceptible to corrosion from chloride solutions, or from saline environments like the coast.

Benefits

- Lowest Cost Corrosion resistant option
- Resistant to oxidation
- Low maintenance
- Durable and strong

Grade 316L Stainless Steel

316 grade is the second-most common form of stainless steel. It has almost the same physical and mechanical properties as 304 stainless steel, and contains a similar material make-up. The key difference is that 316 stainless steel incorporates about 2 to 3 percent molybdenum. The addition increases corrosion resistance, particularly against chlorides and other industrial solvents. 316 stainless steel is commonly used in many industrial applications involving processing chemicals, as well as high-saline environments such as coastal regions and outdoor areas where de-icing salts are common. Due to its non-reactive qualities, 316 stainless steel is also used in the manufacture of medical surgical instruments.

Benefits

- Superior Corrosion resistance
- Chlorine Resistant
- Low maintenance
- Durable and strong



Grade 316 Stainless Steel Kent Hinged Multi-paver installed in Lusail City (Qatar)



Grade 304 Stainless Steel Kent Multi-Paver installed in St. Barts Hospital, London (England)

Testimonials

PARSONS
Parsons International Limited
P. O. Box 2091, Doha, Qatar • Tel: (+974) 4408-8444 • Fax: (974) 4437-7434 • www.parsons.com

Kent Stainless
Ankovan, Westford
Ireland

5 January 2012

Attention : Mr. Shane Curtis & Michael Harley
Project : Lissill Construction Package 1 - CPI
Subject : CPI: Kent Stainless, Lissill City, Qatar

Dear Shane & Michael,

I am writing to express my thanks for the works delivered by Kent Stainless to the Lissill Project in Doha. Your willingness to work with the client, designers and contractors to finalise the specifier detailing, produce the shop drawings and samples has been second to none and has added significant value to the project.

The in-house engineering completed by Kent Stainless and the knowledge and advice given to finalise the design was outstanding. All the products delivered to date have been fully compliant and of the highest quality.

Finally, your frequent presence on site and customer focus has enabled this technically difficult package of works to be finalised in the shortest possible time.

We hope to see you again on future projects.

Yours Sincerely

Patrick McComack
Parsons CPI

“ The In-house engineering completed by Kent Stainless and the Knowledge and advice given to finalise the design was outstanding ”

- Parsons

SKANSKA

Skanska Construction UK Ltd T/A
Skanska Infrastructure Services
Unit 1
Mable Cross Road
Derham Way
Mable Cross
Rushmore
Weymouth DT2 9JG

Phone: +44 (0)1923 776888
Fax: +44 (0)1923 423593
Web: www.skanska.co.uk
Reg. in: England
Reg. No: 151-032
Registered Office: Mable Cross House
Derham Way, Mable Cross, Rushmore,
Wokingham RG40 9WV

For the attention of: Michael Hurley

Kent Stainless
Ankovan
Westford
Ireland

Our ref: MW/002/202312 29 March 2012
Your ref:

Dear Michael,

Re: Letchworth Garden City, Manholes, Grittes, Drainage & Tree Pit Frames

With reference to Letchworth Garden City, we were delighted to work on such a prestigious award winning scheme. The choice of subcontractor and suppliers was crucial to us delivering such a high standard & Kent Stainless were instrumental in this.

As with all our projects during the last 5 years Kent delivered promptly and with the right quality - thanks for your help & keep up the good work.

The client and the main contractor both were delighted with the quality of the work supplied by Kent Stainless. You showed great flexibility and your quality was right first time again.

Yours faithfully,
for and on behalf of
Skanska Infrastructure Services

Matt Wincott

“ The client and the main contractor both were delighted with the quality of the work supplied by Kent Stainless ”

- Skanska

**DIRECTOR OF SERVICES
CORPORATE AFFAIRS & ROADS
AODCW**

15th January 2010

Mr. Stephen Roche,
Kent Stainless,
Ankovan,
Westford,
Ireland.

RE: **Wexford Main Street Regeneration**

Dear Stephen,

Thanks for your help with the designs of manholes and gully covers for Wexford Main Street. We invested heavily in the new paving works and to break up the beautiful stone work with solid cast covers would have been a real shame. The solutions you provided with recessed covers in stainless steel with laser engraving blended in perfectly with the look and feel we wanted to portray for the street.

Because of the engineering know-how you provided and flexibility in design, we will certainly return to Kents for further work. We were designed to find an Irish manufacturer could provide all solutions, and even better a Wexford based engineering firm.

Yours faithfully,


Adrian Doyle,
Director of Services,
Corporate Affairs & Roads

e-mail: adrian.doyle@wexfordcc.ie
☎ 053 9176400

100 Years of Community Service
Cuid 100 bli ag teilim ar bhun an tsíocháin

“ Because of the engineering know-how you provided and flexibility in design, we will certainly return to Kents for further work ”

- Wexford County Council



Kent Stainless Ltd

Ardcavan, Wexford, Ireland

TEL NO: +353 53 9143216
UK FREEPHONE: 0800 376 8377
FAX: +353 53 9141802
WEB: www.kentstainless.com
EMAIL: info@kentstainless.com

